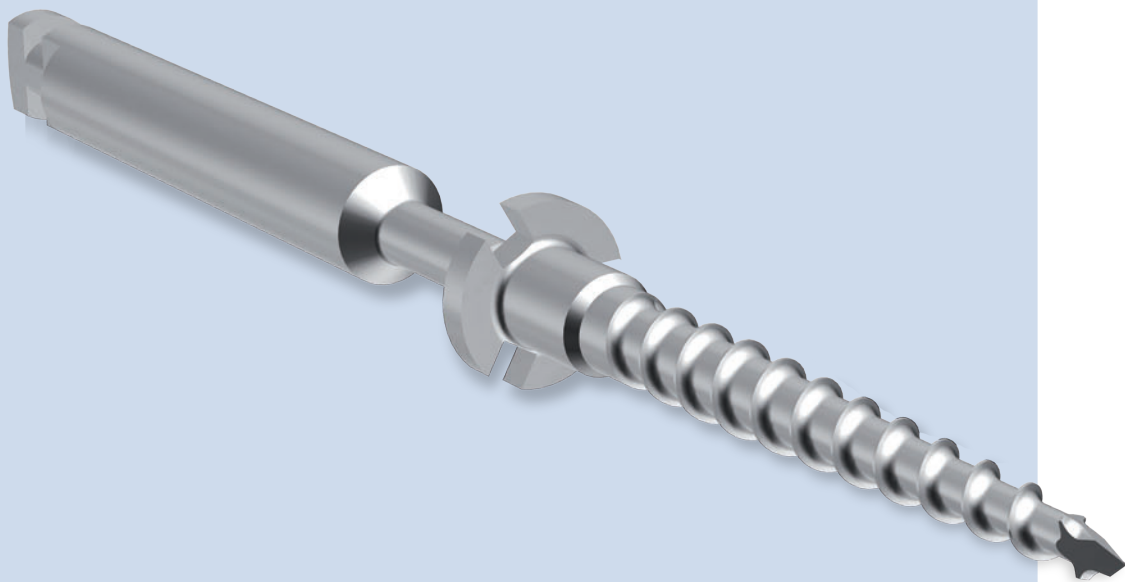


OSTEOSYNTHESIS SCREW



*Designed for
dental surgery...*

Getting aesthetic results in implantology often requires successful bone remodelling.

The anthogyr osteosynthesis screw is designed for a fast and easy bone grafting on the upper jaw as well as on the lower jaw.

Its special design makes it an essential tool for any practitioner expert in bone grafting or willing to learn about it.

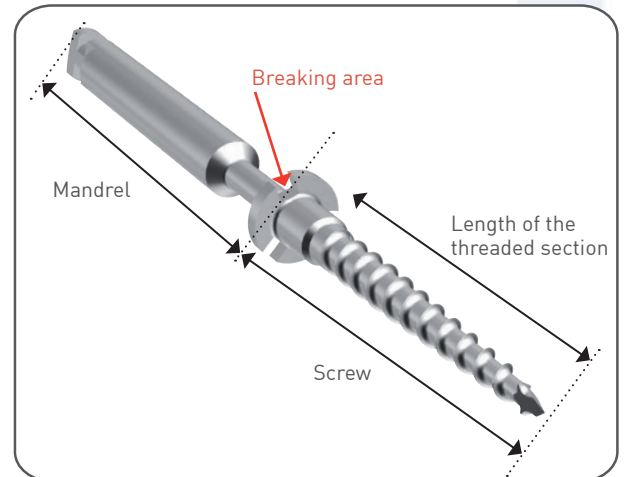
anthogyr

A global solution for dental implantology

THE MAIN ASSETS

- **Accessibility** : The screw and its holder are made up of one single piece (pict. 1). Once connected to the contra-angle, the screw can easily access in the most restricted bone sites.
- **Excellent holding of the screw** : The prehensile mandrel can be easily snapped-off after tightening. The screw cannot fall down on the floor because of bad handling or prehensile instrument wear.
- **Flexibility** : The tightening can be made entirely with a contra-angle or ended manually with the screwdriver. The mandrel's breakage is made easier thanks to the holding key if necessary.
- **Respect of the soft tissues** : The breaking groove is located on the head of the screw (pict. 3). It is designed to be free of burrs after snapping off in order to preserve the soft tissues from any wound.
- **Perfect stabilization of the transplamt** : The screw's head is large enough to ensure a perfect stabilization of the transplamt (pict. 2).
- **Ready to use** : Screws are supplied by pair (single use). The screw remaining unused can be re-sterilized after opening of the packaging.

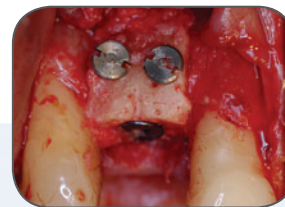
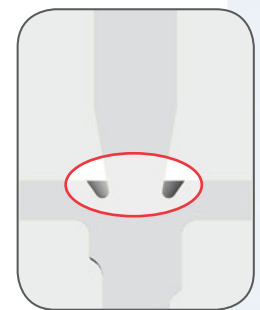
1. Screw and holder in one single piece



2. Screw's head



3. Breaking groove



The osteosynthesis screws are supplied by pair in a double sterile packaging. Available lengths: 8, 10, 12 and 14mm.



Ref. IA CO GREF 08 : screw 8 mm

Ref. IA CO GREF 10 : screw 10 mm

Ref. IA CO GREF 12 : screw 12 mm

Ref. IA CO GREF 14 : screw 14 mm



Ref. IN FHI15100 : drill Ø 1,5 mm



Ref. INGF002 : short mandrels for contra angle



Ref. INGF001 : long mandrels for contra angle



Ref. INGF003 : wrench (to be used with the ratchet wrench)



Ref. OI 3215 : ratchet wrench



Ref. INGF004 : screwdriver



Ref. INGF005 : holding key